

## Flame Manager

Solid State Design Provides Ignition and Flame Monitoring

### Description:

Unit is Equipped with:

- On/Off Switch
- Flame Fail Light
- Flame On Light
- Completely Enclosed
- Compact Size
- Micro Processor Based Ignition Control
- Removable Cover for Easy Installation and Wiring
- Ignition and flame monitoring for burner capacities less than 400,00 BTU/HR
- 120 VAC-60HZ.
- CSA & FM Approval



Part No. 090833 Shown

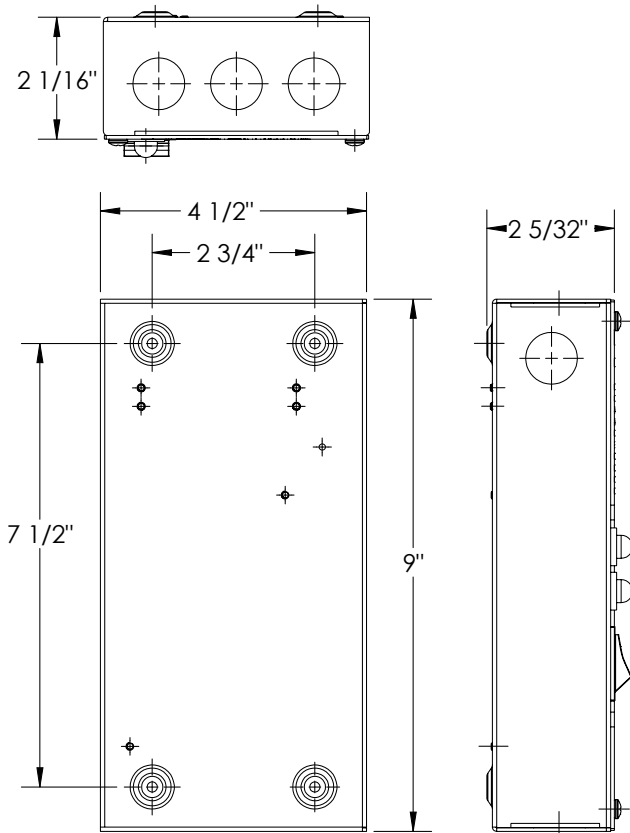
**Specifications over ->**

# Flame Manager

## Specifications:Electrical

Part No.	090829	090833
Description	FLAME MGR CC120S	FLAME MGR CC120S
Input Voltage	100-128 VAC	100-128 VAC
Input Current	100ma@117VAC	100ma@117VAC
Operating Temperature	-40°F to 185°F	-40°F to 185°F
Humidity	up to 95%	up to 95%
Trial for Ignition	8 sec	8 sec
Approval	CSA, FM Approval	CSA, FM Approval
Type	Separate Electrode and Sensor	Combined Electrode and Sensor

## Specifications:Dimensions



## Specifications:Wiring Diagram

